



MWE COLOURS

SURFACE FINISHING



Fachhändler-Distributor:



www.mwe-na.com



Qualität aus Leidenschaft · Quality built on Passion





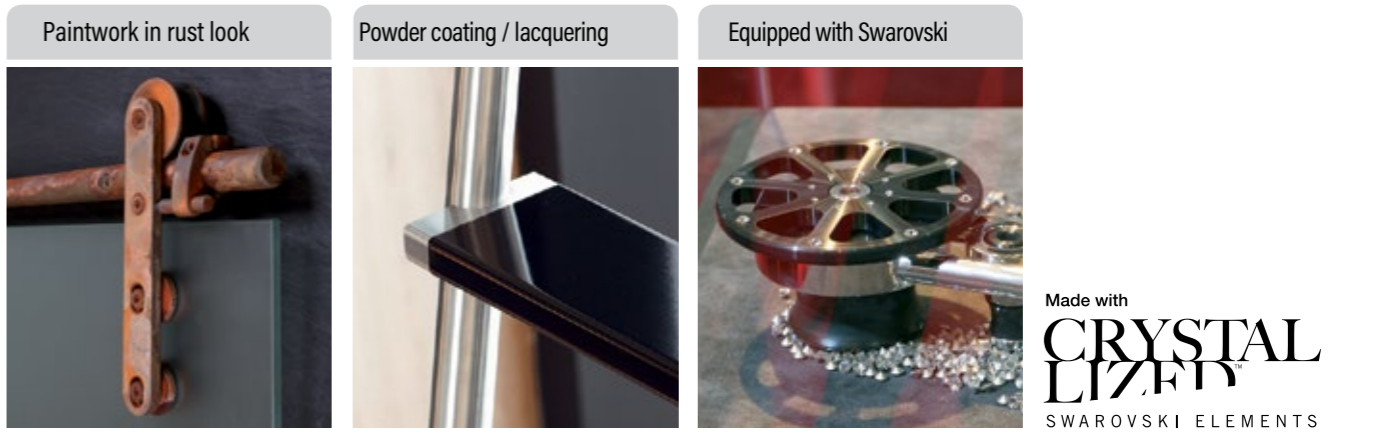
HOCHGLANZPOLIERT
SPIEGELPOLITUR



The MWE surfaces: standard quality & further surface refinements

The MWE Edelstahlmanufaktur is known for its complex and diverse surfaces. As far as possible, we would like to bring you closer to the complexity of surface finishing and the associated increase in quality. Our standard surface is given a silky, shimmering finish in several grinding steps by hand, thus achieving jewelry quality:

- 1 MWE Standard - jewelry quality (grain 600)
- 2 Highly polished surfaces / completely polished
- 3 Partially polished surfaces
- 4 PVD coating in various colors, monochrome or bicolor stainless steel look
- 5 Painted stainless steel and powder coated
- 6 Swarovski stones in stainless steel



Made with
**CRYSTAL
LIZED**
SWAROVSKI ELEMENTS



1 | Our claim: stainless steel surfaces in jewelry quality


- Multiple sanding by hand
- With initially coarser grain up to grain 600 (fine line - jewelry quality)
- Final sanding using the Scotch Brite® process

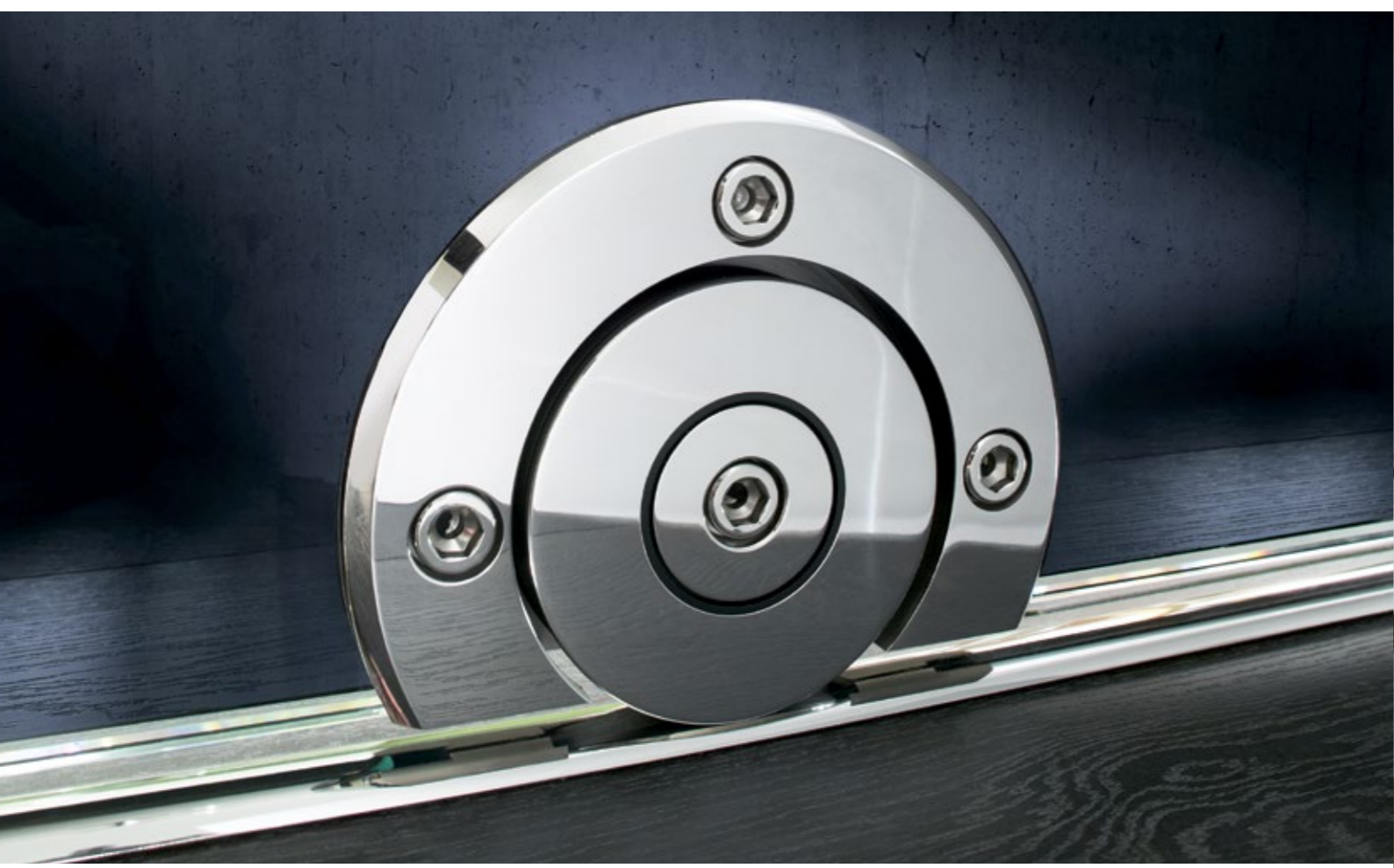
The main advantages of this surface processing include:

- Very fine surface structure with a uniquely brilliant look
- Optimal protection against contamination and rust





 High gloss surface mirror polished



2 | Mirror...Mirror

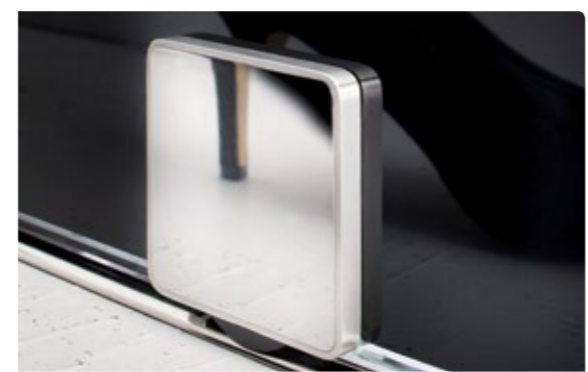
- Surface is polished to a high gloss finish - mechanically by hand or by machine
- Stainless steel is treated with special polishing paste
- The end result is a mirror polish
- Mirror polishing can encompass the entire product - no matter how complex the construction





3 | **The details matter**

- Partial polishings set great accents
- Individual stainless steel parts with a fine line finish (jewelry quality) can be partially polished to a high gloss



Spider | Surface carbon black / stainless steel grain 600



Spider | Titanium matte / polished stainless steel



Spider | Gold matte



Spider | 24 carat gold plated



Spider | Carbon Black / Gold matte



Spider | Copper Matte

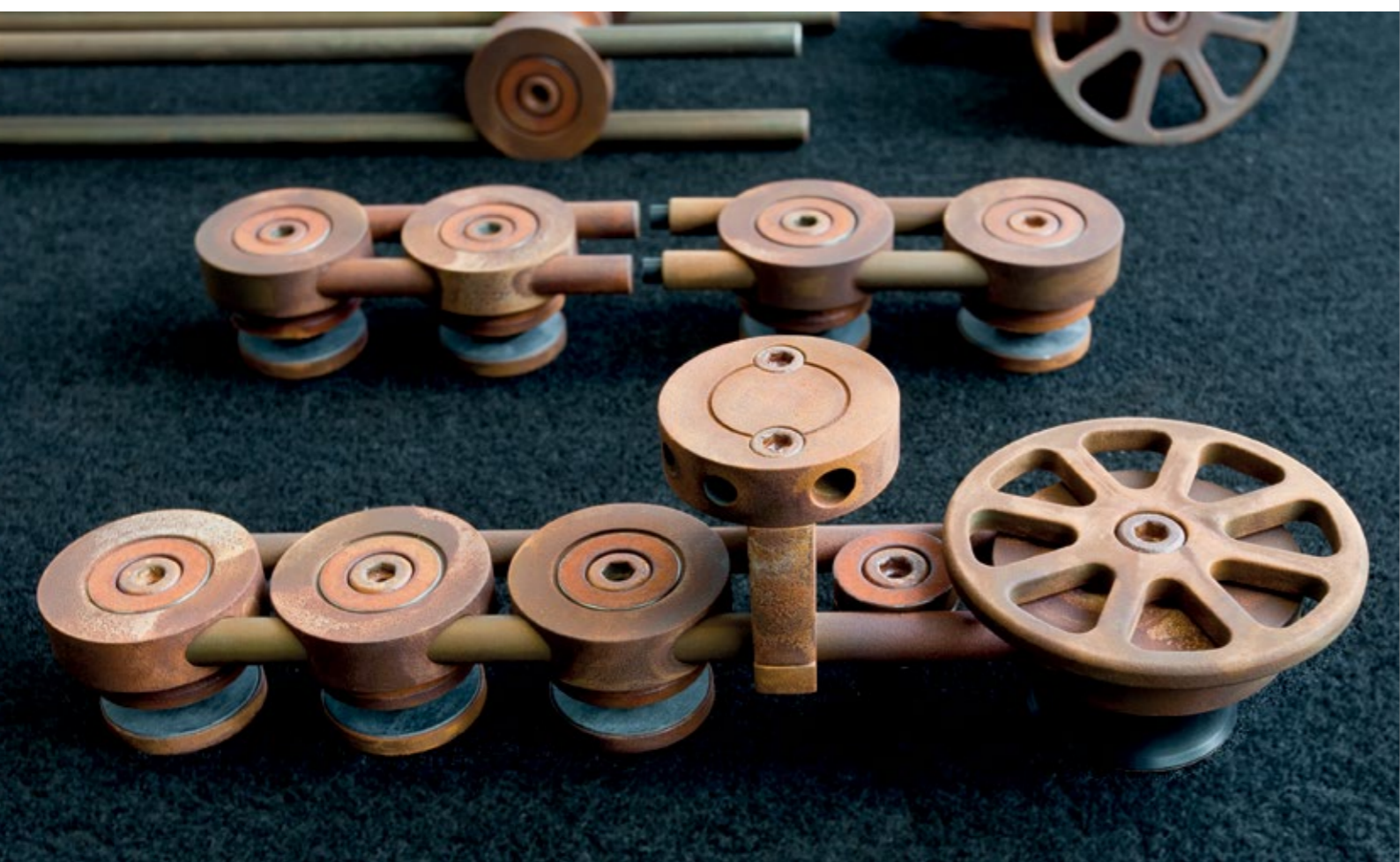




4 | **Elegant expression of your individuality**

- PVD vacuum technology - when exposed to heat, the stainless steel surface is discolored, abrasion and scratch resistant,
- Available surfaces are: copper optics | Gold look | Black | Brass | titanium
- Can be polished to a high gloss on request
- PVD coating possible for components
- up to a length of 1500 mm





5 | Special order aged look

- An aged look is often requested. The stainless steel pieces shown here were given a very special paint finish that refines the high-quality stainless steel material with a very striking rust look.
- Whether used on a large scale or occasionally, with one of these striking surface, you can set impressive accents.





- 6** | Always suitable - stainless steel painting and powder coating
- Individual stainless steel pieces can be accented in color according to the existing interior.
- Paintings according to the RAL color fan
 - Powder coatings in all colors possible





Equipped with Swarovski-Elements crystals

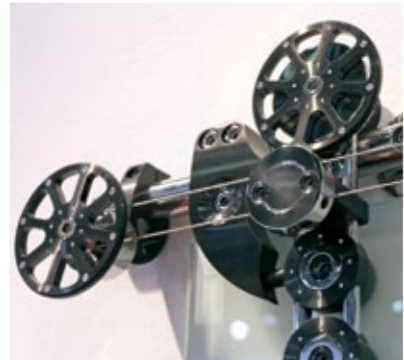


Made with
**CRYSTAL
LIZET**
SWAROVSKI ELEMENTS



7 | Brilliantly staged

- Both fittings and accessories can be equipped with real highlights.
- The finest Swarovski stones can be placed in almost every piece of stainless steel. All surfaces previously shown can be refined with this.





DOORS & HARDWARE
MADE IN GERMANY



1901 Tigertail Blvd, Dania Beach, FL 33004

954.924.6137
sales@bartelsdoors.com

www.bartelsdoors.com