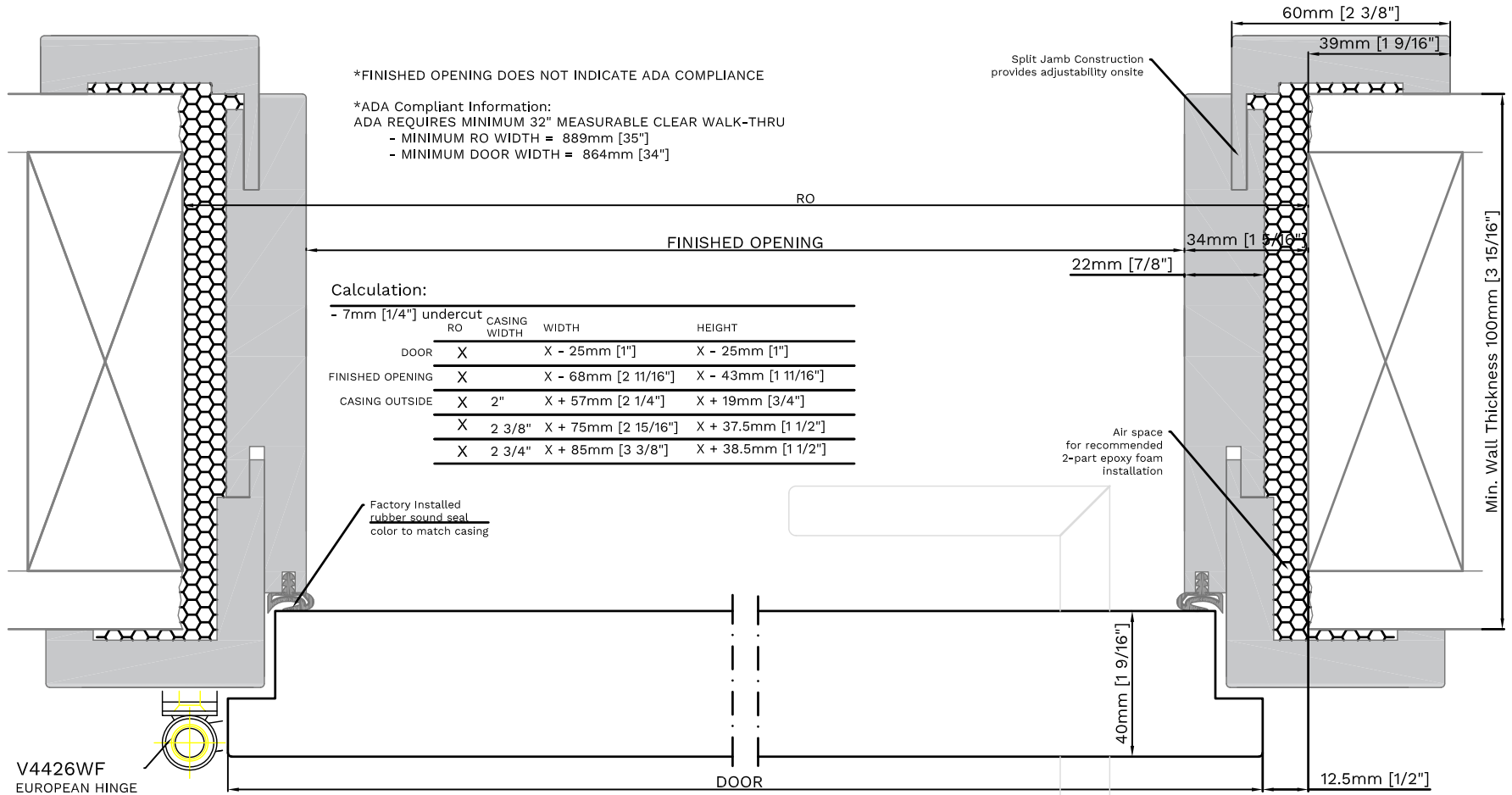


German Edge

AVAILABLE CASING WIDTHS: 51mm [2"] | 60mm [2 3/8"] | 70mm [2 3/4"]

DOOR DIMENSIONS ARE REFERENCED FROM THE HINGED SIDE!
HINGED SIDE = THE SIDE THE DOOR SWINGS TOWARD
[ILLUSTRATED AS LEFT HINGE]



Technical drawings are subject to change without notice. All millimeter dimensions are exact and supersede inch conversions.

MODEL:
German Edge

DESCRIPTION:
Rebated edge

PREPARED DATE:
04.DECEMBER.2020



Tel: 954.924.6137
1901 TIGERTAIL BLVD., DANIA BEACH, FL 33004
SALES@BARTELSDOORS.COM