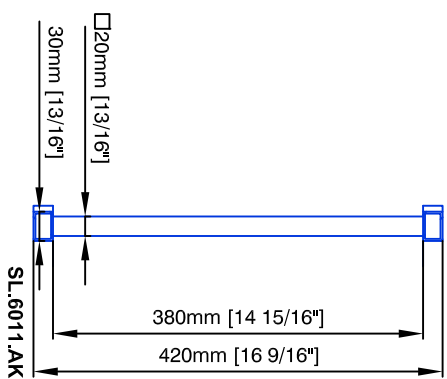
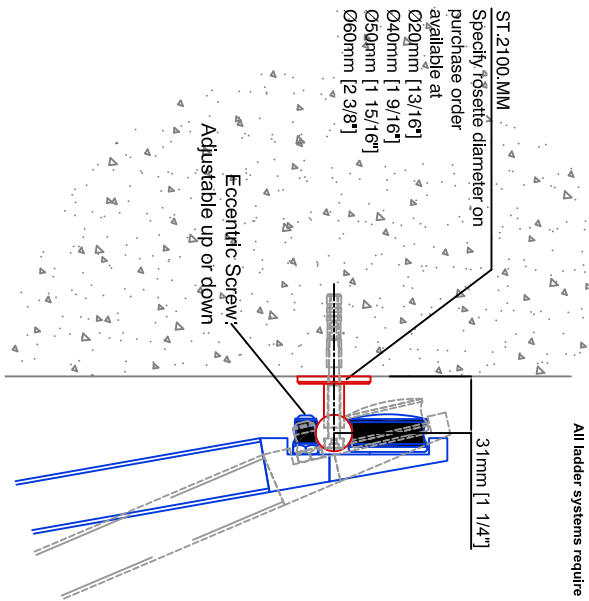
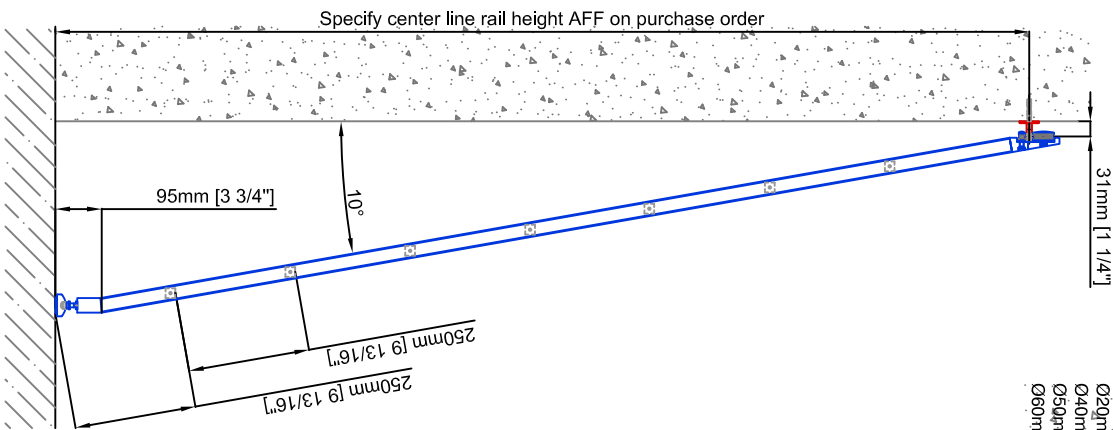
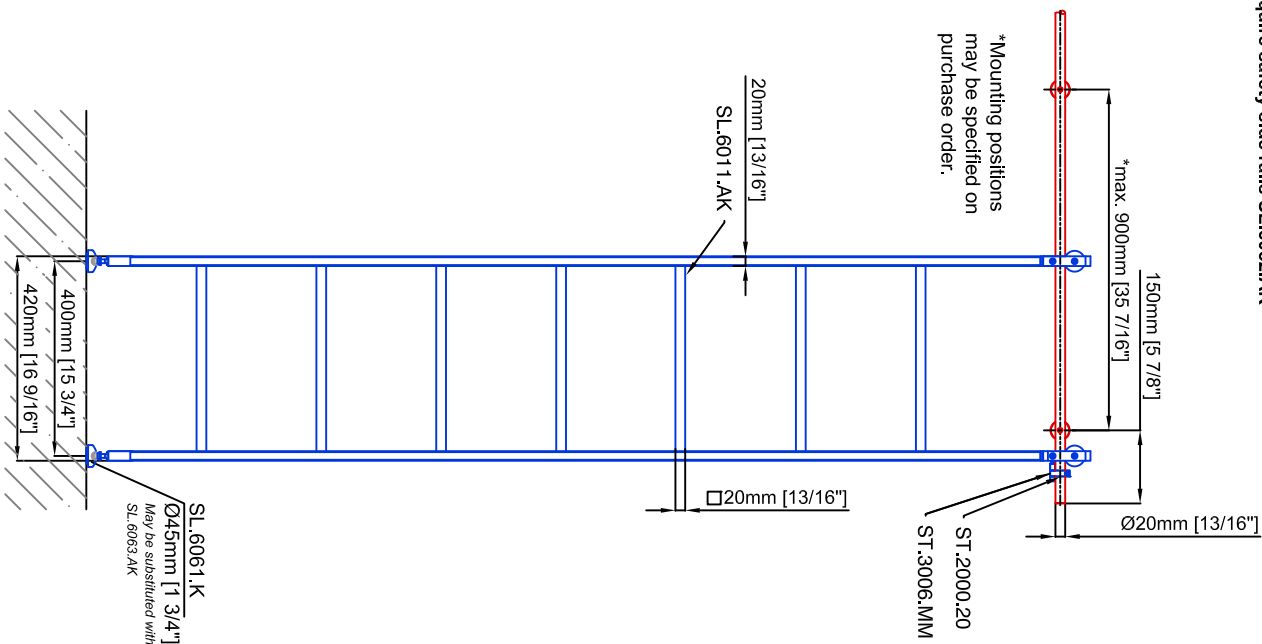


Technical drawings are subject to change without notice.
All millimeter dimensions are exact and supersede inch conversions.

Ladder height at or above 3000mm [118 1/8"]
require safety side rails SL.6052.AK



Copyright MWE NA Inc. all rights reserved. Reproduction or other use of these designs without written consent from MWE NA Inc is prohibited.
All ladder systems require reinforced walls, cabinets, or shelving.

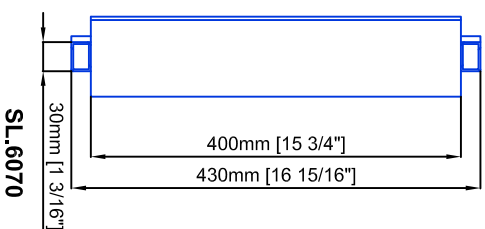
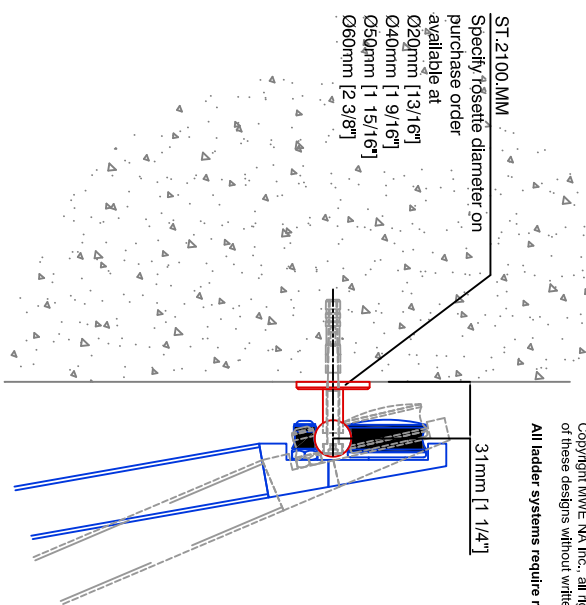
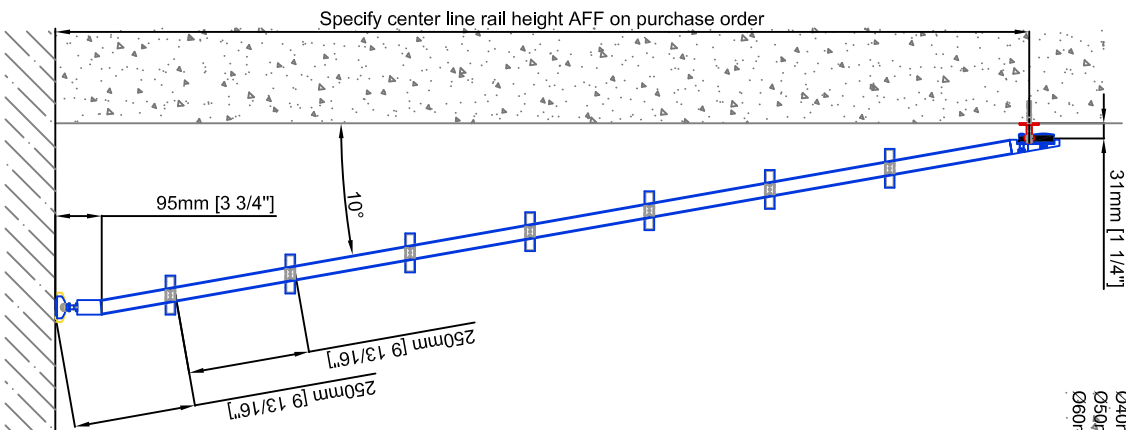
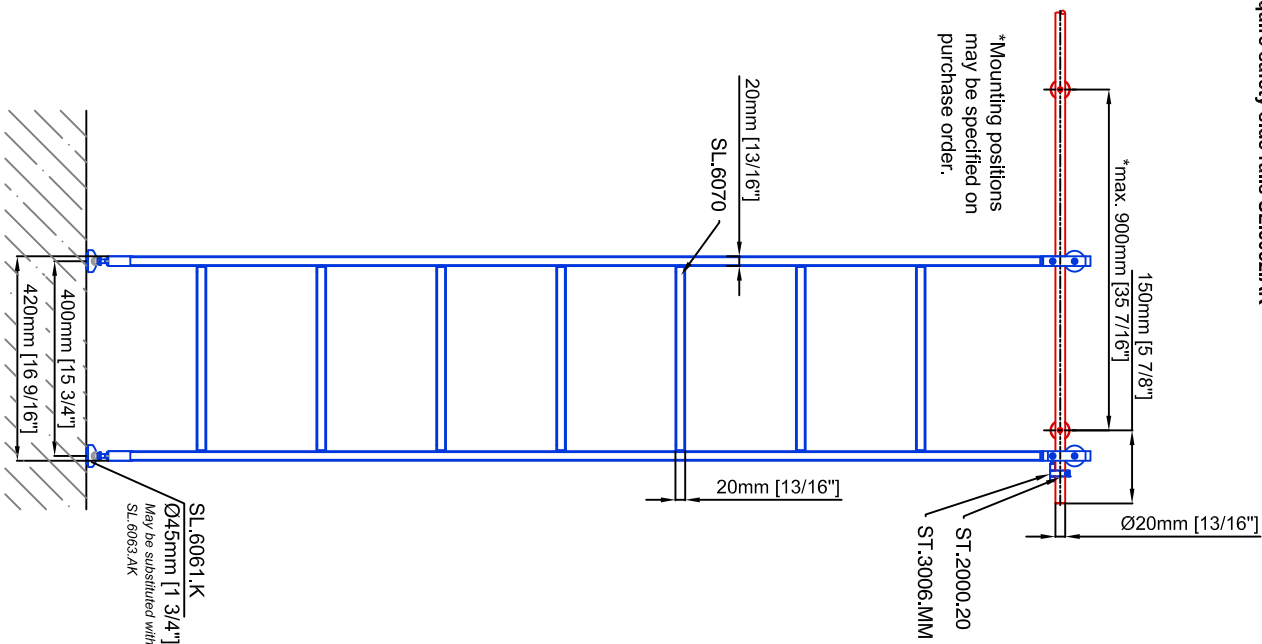
Sliding Ladder SL.6002.AK

Date Prepared: October 2018

Prepared By: CDA | JRT

Technical drawings are subject to change without notice.
All millimeter dimensions are exact and supersede inch conversions.

Ladder height at or above 3000mm [118 1/8"]
require safety side rails SL.6052.AK



Copyright MWE NA Inc. all rights reserved. Reproduction or other use of these designs without written consent from MWE NA Inc. is prohibited.
All ladder systems require reinforced walls, cabinets, or shelving.

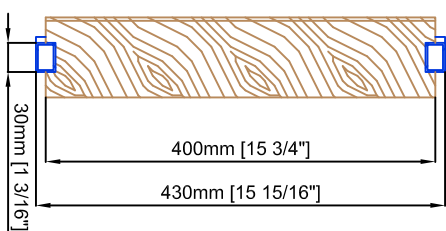
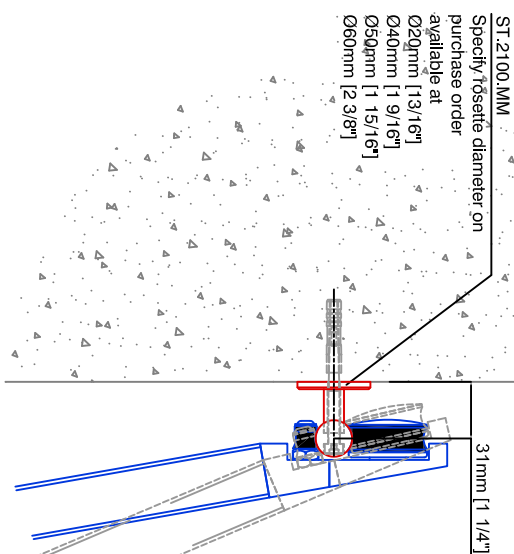
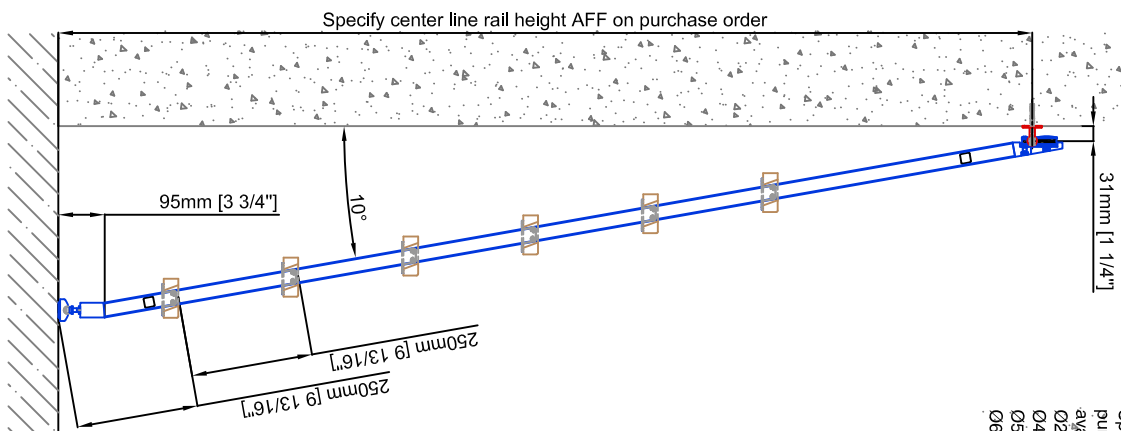
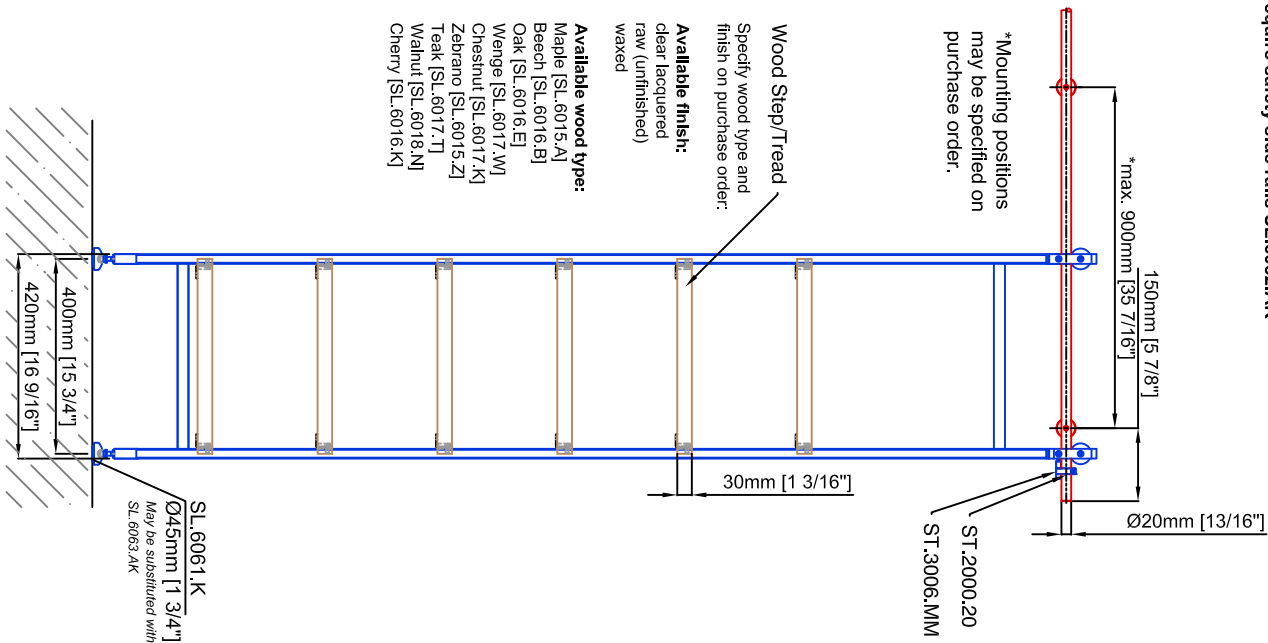
Sliding Ladder SL.6002.AK.E

Date Prepared: October 2018

Prepared By: CDA | JRT

Technical drawings are subject to change without notice.
All millimeter dimensions are exact and supersede inch conversions.

Ladder height at or above 3000mm [1'18 1/8"]
require safety side rails SL.6052.AK



Copyright MWE NA Inc. all rights reserved. Reproduction or other use
of these designs without written consent from MWE NA Inc is prohibited.
All ladder systems require reinforced walls, cabinets, or shelving.

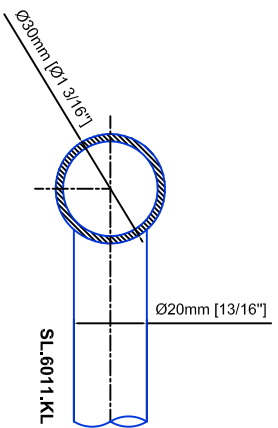
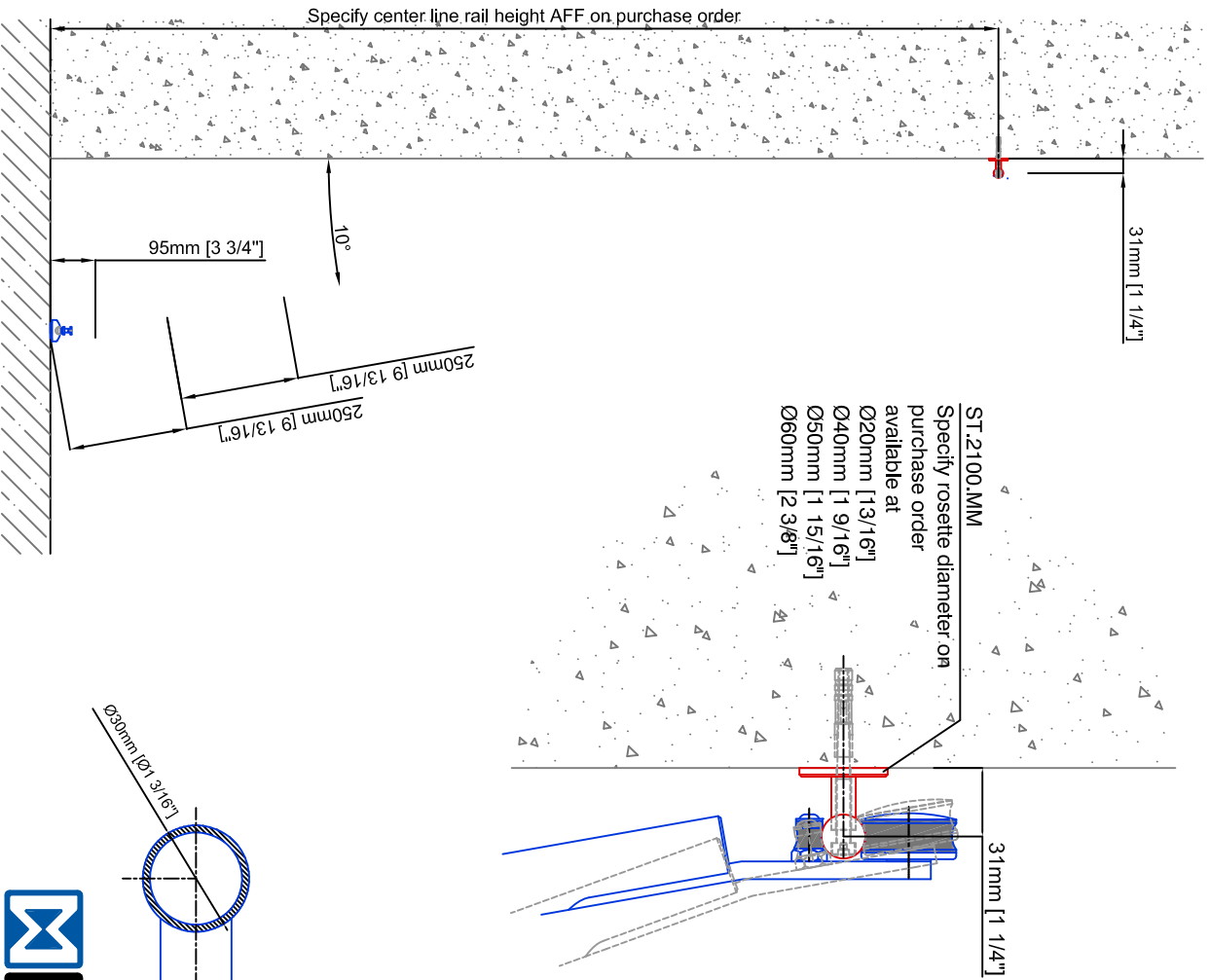
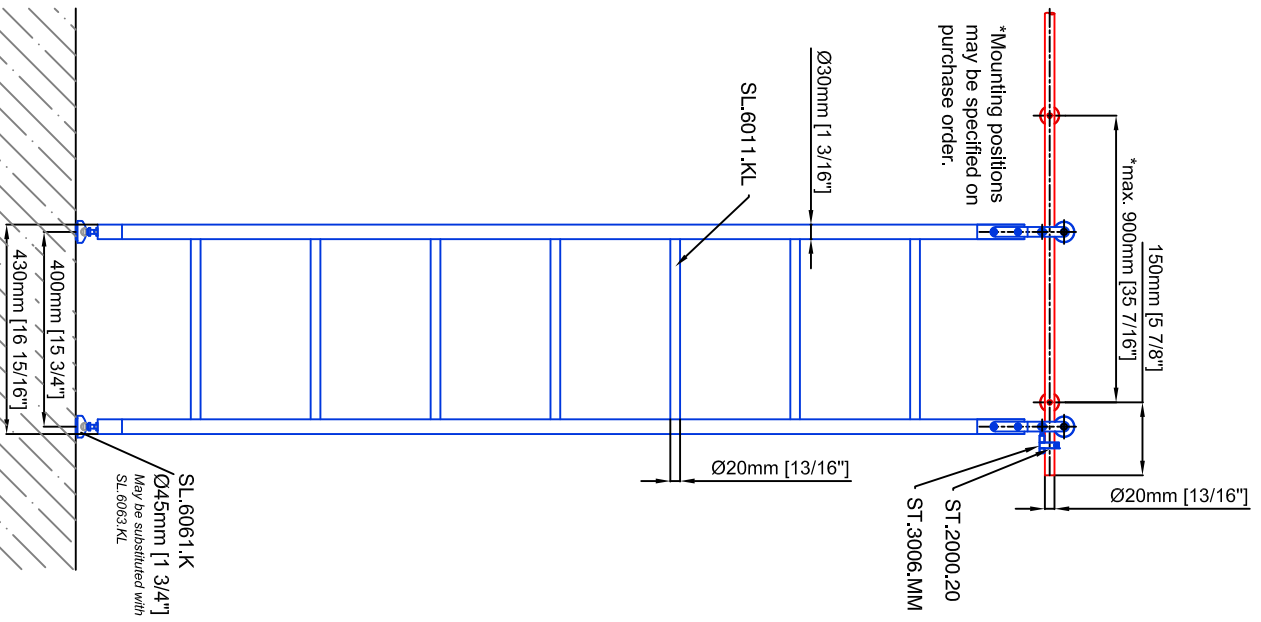
Sliding Ladder SL.6002.AK.H

Date Prepared: October 2018

Prepared By: CDA | JRT

Technical drawings are subject to change without notice.
 All millimeter dimensions are exact and supersede inch conversions.
Ladder height at or above 3000mm [118 1/8"]
 require safety side rails SL.6052.KL

Copyright MWE NA Inc., all rights reserved. Reproduction or other use
 of these designs without written consent from MWE NA Inc. is prohibited.
All ladder systems require reinforced walls, cabinets, or shelving.

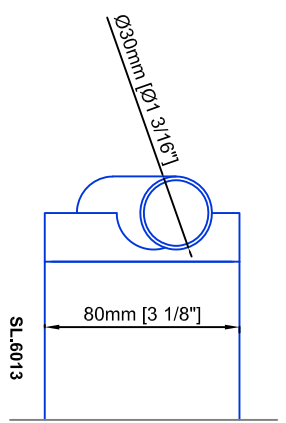
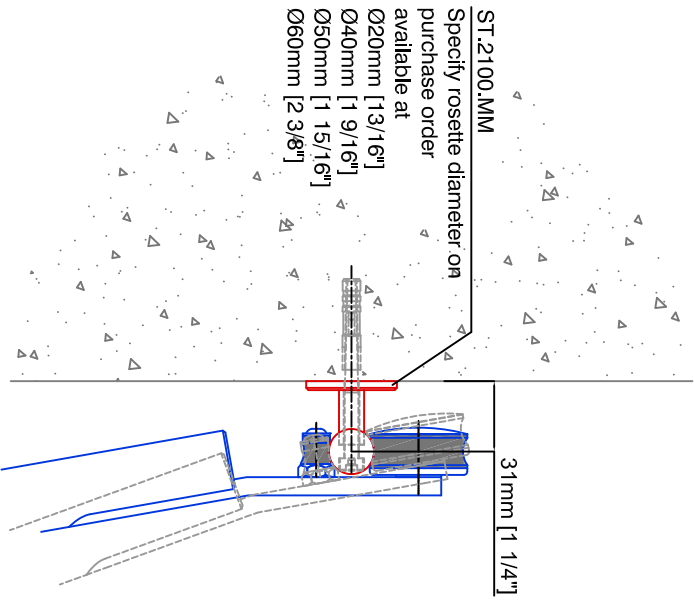
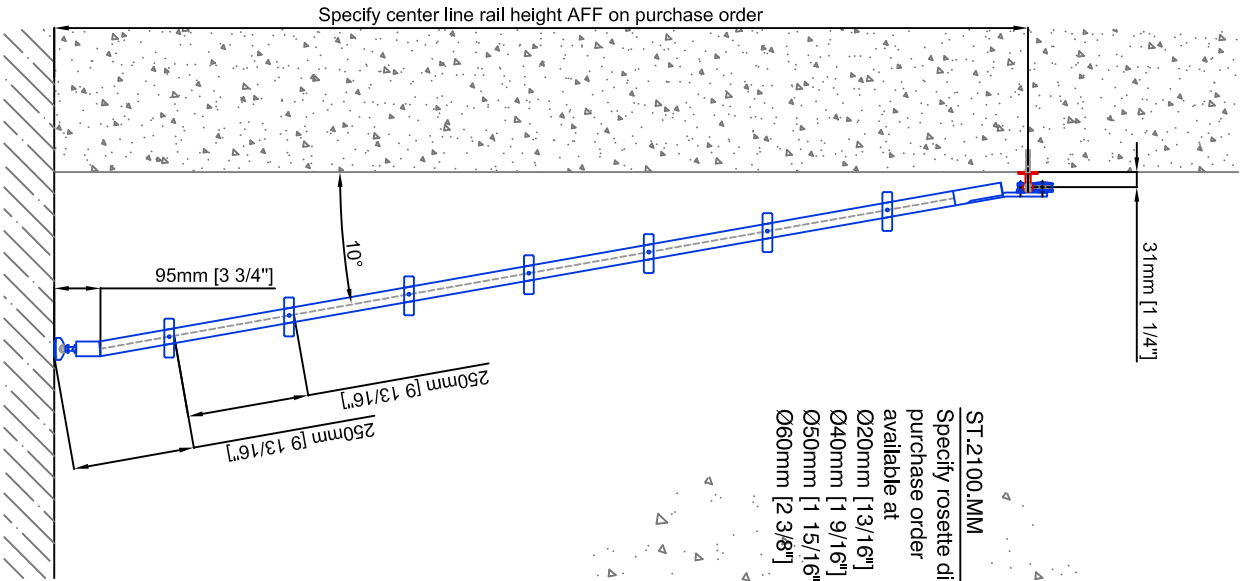
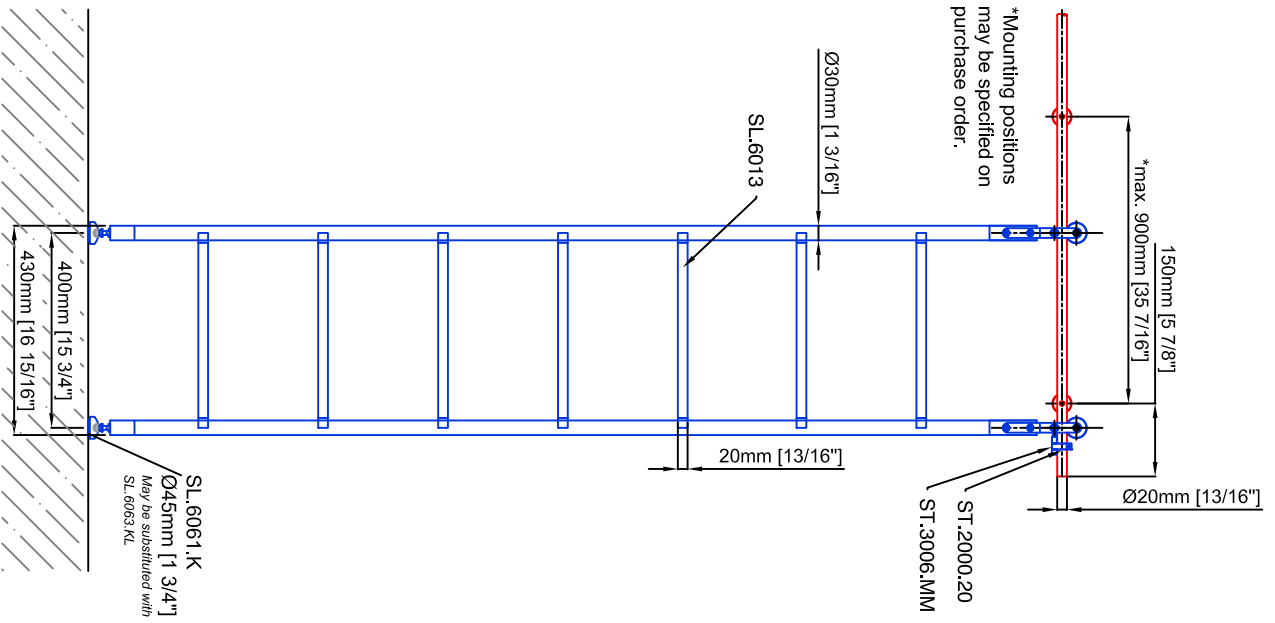


Sliding Ladder SL.6002.KL

Date Prepared: October 2018

Prepared By: CDA | JRT

Technical drawings are subject to change without notice.
 All millimeter dimensions are exact and supersede inch conversions.
Ladder height at or above 3000mm [118 1/8"]
 require safety side rails SL.6052.KL



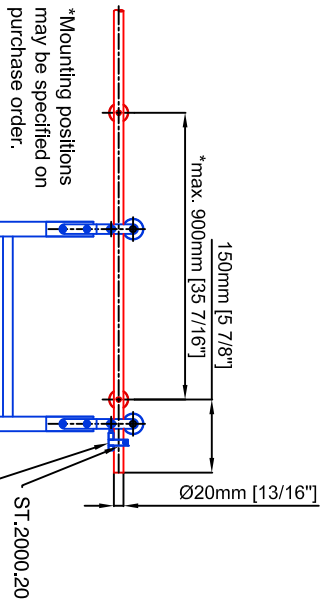
Sliding Ladder SL.6002.KL.E

Date Prepared: October 2018 Prepared By: CDA | JRT

Copyright MWE NA Inc., all rights reserved. Reproduction or other use of these designs without written consent from MWE NA Inc. is prohibited.
 All ladder systems require reinforced walls, cabinets, or shelving.

Technical drawings are subject to change without notice.
 All millimeter dimensions are exact and supersede inch conversions.
Ladder height at or above 3000mm [118 1/8"]
Require safety side rails SL.6052.KL

Copyright MWE NA Inc., all rights reserved. Reproduction or other use of these designs without written consent from MWE NA Inc. is prohibited.
All ladder systems require reinforced walls, cabinets, or shelving.

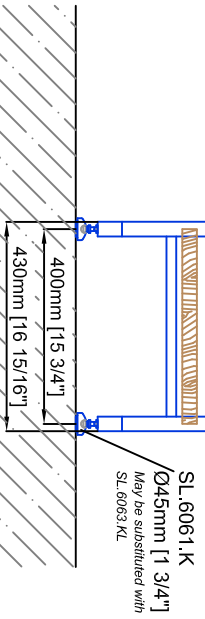


*Mounting positions may be specified on purchase order.

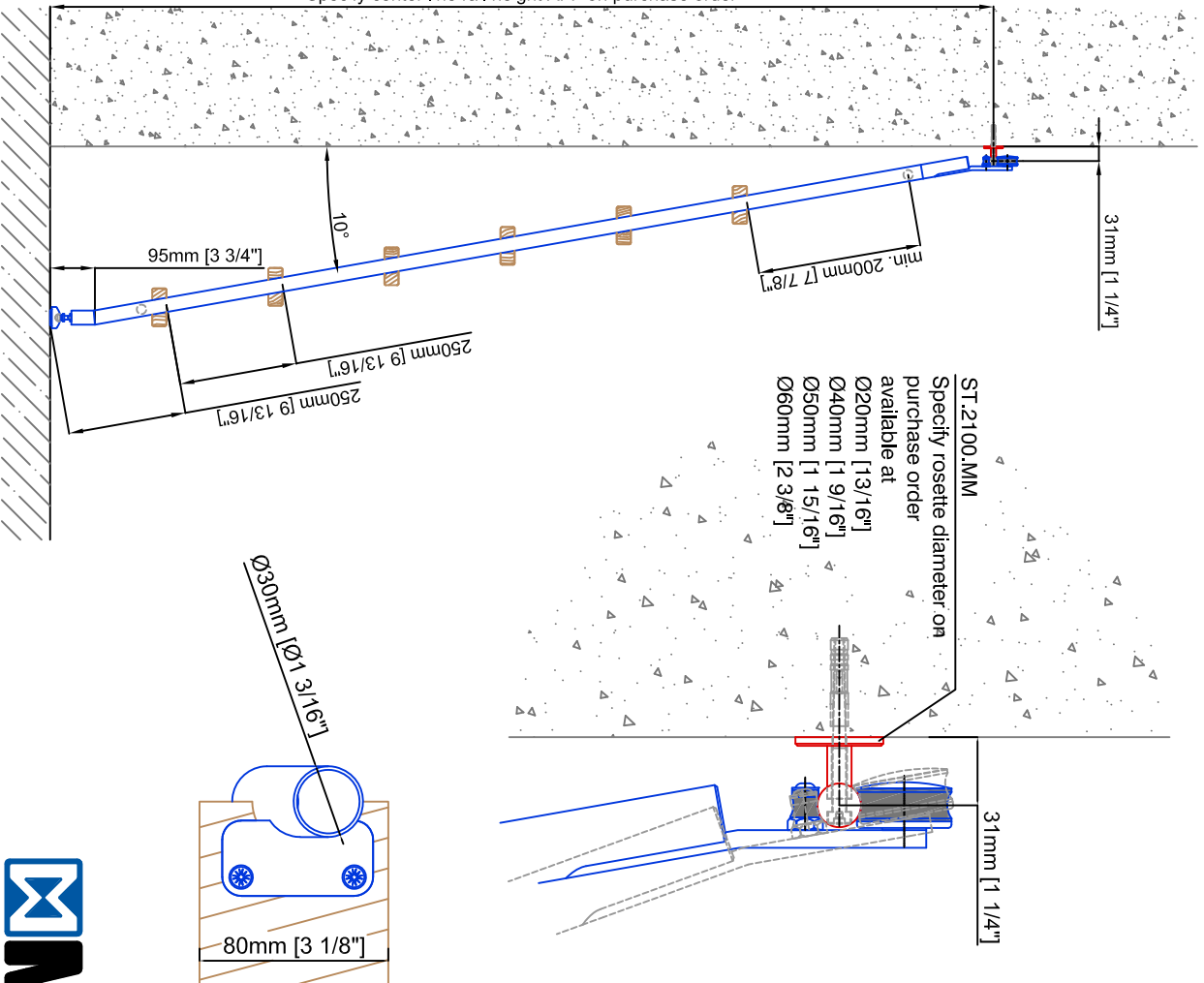
Wood Step/Tread
 Specify wood type and finish on purchase order:

Available finish:
 clear lacquered raw (unfinished) waxed

Available wood type:
 Maple [SL.6015.A]
 Beech [SL.6016.B]
 Oak [SL.6016.E]
 Wenge [SL.6017.W]
 Chestnut [SL.6017.K]
 Zebirano [SL.6015.Z]
 Teak [SL.6017.T]
 Walnut [SL.6018.N]
 Cherry [SL.6016.K]



Specify center line rail height AFF on purchase order



Sliding Ladder SL.6002.KL

Date Prepared: October 2018 Prepared By: CDA | JRT

